



FRIENDS OF
MYALL PARK
BOTANIC GARDEN

NEWSLETTER

Vol 19 No 2 Winter 2010



We are happy to receive your contributions to our newsletter.
Please note all views expressed are those of individual authors.

As the Year of Biodiversity rolls on, we continue to celebrate our Garden's role in furthering the cause of growing Australian plants that are both beautiful and appropriate.

In this issue:

nita's niche - notes from our Chairman.....p. 2
 Special Plant Salep. 3
 Brigalow Birds Weekp. 4
 Friends' Working Beep. 5
 Caboolture Reportp. 8
 Farewell Director Garth...p. 9
 Help wantedp. 9
 PCAP campp. 10
 Open Day goodiesp. 11
 New logo, Valé, Books...p.12
 Catalogue.....p.15



Eucalyptus oxymitra - one of the stars of the Garden in April (Photo: Peter Reilly)

THANKS

Thank you to the St. George office of Howard Hobbs, MLA for Warrego, for your support for our newsletter.

Welcome to Open Day - Saturday August 28

From 11am - evening plus Sunday 6.30am walk



Birds, plants and biodiversity are highlighted this year:

- Opening of the 'Feathers and Flight' photographic exhibition
- Release of the Brigalow Birds DVD and book
- Bird walks late afternoon and early morning
- Plants for sale
- Diversity presentation by Dr Don Sands
- Garden tours

Open Day will also feature:

- Miles Regional Arts Council Inc - Radio Play 'Ghost Bats'
- Faceting (gemstones) demonstration by Jeff Guihot

as well as :

- Gallery Shop open for specialty gift ideas
- Morning and afternoon teas
- Lunch and bar available
- Raffles

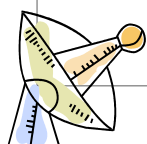
Entry \$10 - children under 14 free

DATES for your DIARY 2010

Directors' meetings: July 23rd, AGM November 26th

Open Day: Saturday August 28th

Good time to visit the Garden - any time!



Contacts for Myall Park Botanic Garden

Website: www.myallparkbotanicgarden.org.au

Office: phone 07 4665 6705

Email: myallparkbotanic@bigpond.com



nita's niche

UNEXPECTED POSITIVES AND UNEXPECTED COSTS OVER THE LAST SIX MONTHS

Unexpected positives first as these are many: **New caretakers exceed our dreams.** Chris and Jeff have settled in well. Their communication skills enable them to converse with visitors, staff, directors and consultants. They have the special ability of putting everyone at ease. They both go quietly about their business, keeping an eye out for those jobs that require doing and before any of us know, these tasks are completed. One example, the boundary fence was repaired, over weeks, before any of the Directors knew this task was a focus. Chris and Jeff, thank you and keep on enjoying yourselves.



A caretaker initiative: a useful sign to help us find them.

Two working bees accomplished much – please see reports within this edition. Thank you to each and every member of the groups.

Offers of additional support have come from a wide variety of wonderful people. Naming but a few, these include: maintenance volunteers with special skills in horticulture, gardening and building; Australian plant growers; invertebrate and bird experts; a botanist. Thank you.

A very generous gift has been received from a Garden Friend. He is donating funds for the canopy over the welcome panels. This canopy will not only protect our signs from the elements but provide a shady place for those wishing to read the information there. In the past many a visitor quickly moved into the shade of the Old Mill. Soon they will be able to stop comfortably and gather the information to help understand our special place.

Erosion prevention Plans are progressing to ensure the run-off from rains does not cause damage to our soils, fences and gardens. This is a major focus for us this year as much damage has resulted from run-off not directed appropriately.

Plans to increase our plant biodiversity and thus increase our invertebrate populations. Experts have offered their time to assist with grant writing and to provide guidance with species selection.

There is a presentation on this future planning during our Open Day .

Identification of mature eucalypts Many mature eucalypts have been identified by Dr Tony Bean. These trees are part of our valuable collection being some of the first planting of Australian trees in an Australian Botanical Garden, but identification has been difficult. Tony, thank you so very much for your guidance with over 100 of our specimens.

Brigalow birds project is attracting much interest – please see report on page 4.

Now the **unexpected costs:**

New tank installed

The main Garden water storage developed a major leak and a new tank has been installed.

Cost was approx \$10,000. Richard Pechey kindly managed this project for us and also installed and connected it all. He generously gave many hours of free time. Thank you Richard. Thank you also to local tradesman Robert Craig-Haven who inspected our tank and generously donated his time.



Tanks - the old and the new

Power poles Three power poles have seen better days and are now being replaced.

Another \$6,500 has to be found to complete this essential up-grade.



New poles with strong arms

Without the Gift Fund these essentials would not have been achievable.

Big thanks to everyone who has donated to our fund over the past couple of years. Without your dollars and cents we'd be sunk.

Our fund is currently low, so as usual we just tighten our belt a little more as the running, maintaining and developing of our Garden exist on less than a shoe string. Remember the only funds we are kindly given are \$10,000 from the Western Downs Regional Council to cover insurance, fuel and electricity. The rest is all gathered from retail sales, admissions, accommodation and donations – from you.

A big thank-you from all our Staff & Board of Directors.

Kind wishes everyone.

nita

PROPOSED SALE OF SPECIAL PLANTS ON OPEN DAY

As it is the aim of the Garden to promote the growing of dryland plants from other parts of Australia, we will be offering some of these plants for sale on Saturday 28th August.

These will be priced well below standard nursery prices and will mostly be tubestock, however the plants will be well established.

At present we hope to offer many eremophila species as well as several well-regarded eremophila hybrids. Eremophilas grow well in the Garden. They are highly adaptable to local conditions and exist well with little or no regular watering. Most are frost tolerant.

Western and Central Australian eucalypts are spectacular when in flower. They also adapt well to Western Downs conditions. Whether grown for their flowers, fruits, or growth habits, many of the smaller mallees are well suited to a smaller garden.

We will also have several of the melaleuca and hakea species found flowering in the Garden at the end of winter and the beginning of spring. These shrubs are also very hardy and provide excellent bird habitats.

We hope that the sale of these plants will be well received as we hope to expand the range in future years. There are very few places where such a wide range of desirable plants can be found.

All funds raised will be used to expand the restocking of the Garden. The wider the range of plants in the Garden, the wider the range of plants we will be able to offer in the future. After all, the promotion of Australian native plants is one of the main aims of Myall Park Botanic Garden.

We hope to have the following plants for sale on the Day: (Thanks to Peter Reilly for all the photos)

Acacia cultriformis

A. glaucoptera (right)

Eremophila alternifolia x maculata

E. decipiens

E. dempsteri

E. glabra carnosa

E. glabra silver foliage



E. hygrophana

E. laani

E. maculata, apricot form

E. mackinlayi

E. microtheca

E. nivea (right)

E. 'Picanniny Dawn'

E. polyclada

E. polyclada x bignoniifolia
(Big Poly) (right)

E. racemosa

E. "Summertime Blue"

E. weldii



Eucalyptus campaspe

E. erythrocorys (right)

E. erythronema (right)

E. forrestiana

E. kingsmillii

E. kruseana (right)

E. lansdowneana

E. lehmannii (right below)

E. macrocarpa

E. orbifolia

E. stricklandii

E. yalatensis

E. youngiana (right)

Hakea nodosa

H. purpurea

Melaleuca elliptica
(right)

M. laterita

M. nesophila

Myoporum montanum



OPEN DAY AND BRIGALOW BIRD WEEK

Brigalow Birds Week runs from 26th August to 1st September 2010. **Open Day at Myall Park Botanic Garden** this year will be centered around **Brigalow Birds** and includes:



- **Official opening of the Brigalow Birds Inaugural Photographic Exhibition 'Feathers and Flight'** whose objectives include:
 - * to raise awareness of the wide variety of birds in the brigalow region
 - * to encourage people to enjoy the variety of birds, the associated plants and the ecosystems of the brigalow region
 - * to promote awareness of birding groups and to encourage membership and participationThis exhibition will be on display at Myall Park Gallery until late November. Photographers include Graeme Chapman, Ian Montgomery, Julian Robinson, Sandra Neill, Peter Beasley, and Bindy Warby. Their amazing images include both common and very rare species. For more information please contact: nita.c.lester@gmail.com or visit www.brigalowbirds.org
- **Release of the Brigalow Birds DVD and book** (and continued sales of the Australian Birds for Children card set - for more details see page 11 of this newsletter).
- **Bird walks** late afternoon Saturday 28th and 6.30am Sunday 29th at the Garden.
- **Birding visits to other local properties and recognized birds sites** can be arranged.

The brigalow region west of Dalby features many diverse and publicly accessible birding sites, all within a four hour drive of Brisbane. Key sites include Southwood, Alton and Erringibba National Parks, Myall Park Botanic Garden and several large and diverse reserves along the stock route network including The Gums, Green Timbers and Basin Downs.

Over 200 bird species have been recorded from the region. Regulars include Hooded Robin, painted Honeyeater, White-winged Fairy-wren, Crested Bellbird, Blue Bonnet, Ground Cuckoo-shrike and Square-tailed Kite. These and many other Brigalow Belt specialities can be observed at the **16 recommended public birding sites**. Bird watching bliss!

Myall Park Botanic Garden is an ideal base to explore the area. Garden admission of \$5.50 per person is included in tariff of on-site accommodation. Remember your Friends' discount! You need to book immediately as spring is a popular time in the Garden [For Garden inquiries telephone 07 4665 6705 or email myallparkbotanic@bigpond.com]

Maps, bird lists, program and full details for accommodation, camping, fuel availability and parking will be available. A number of property owners have offered guided bird walks during Brigalow Birds Week. Accommodation is also available at some. Please contact info@brigalowbirds.org for all information.

Enquiries re: Brigalow Birds Week: please telephone 07 3391 4287 [nita], 07 3878 1896 [Margaret Clark] or email: nita.c.lester@gmail.com ; marclark1@gmail.com

Link your visit to this brigalow region with your travels to 'Bowra', Carnarvon Gorge, St George, Kilcowera Station south of Thargomindah and other western locations.



FRIENDS AUTUMN WORKING BEE 2010 April 10th to 17th

Another Friends' working-bee has come and gone and this year the theme was 'Garden Renewal'. In a marathon effort we managed to plant 210 new plants and create a completely new Acacia garden section.

It was again pretty well a full house with **Joan, Ros and Patty** sharing the 'honeymoon suite' with **Allen and Dale** in the 'cells' - all in the Quarters. First-timer **Anya** tented in the quadrangle, while **Dan, Wendy, John** and **Robyn** shared Avochie with **Lyn** and me. Dan and Wendy renewed their acquaintance with their old Toyota Troupie, which we were told is really called "Rex" after the dinosaur of large tough build. John and Robyn made the great effort to travel up from Boggabri NSW, and we thank them heartily for that.



New caretakers Jeff and Chris were quickly on the job

We also welcomed the company and assistance of our new caretakers of one month – **Jeff** and **Chris**. They were keen to learn some of the ins and outs of the property. The garden and accommodation, gallery and shop, plumbing and watering systems take on the proportions of a small town when you are dealing with the details.

Leon and **Gwen** came with Lyn and me for the preceding week. Gwen to help Lyn with some of the preparatory work such as assembling pre-written name tags, and Leon to contribute his considerable mechanical skills to getting some of the machinery in order.

Perhaps this is a good place to start with our jobs record:

- We trialed a new method of reattaching home-made labels to their stakes - involving sandpapering, metho and regluing. This was successful, so the remainder can be done when time permits.

- We fitted new front shock-absorbers to the Toyota Hilux Ute.
- The Toyota Troupie got a complete rebuild of the glow plug circuit with a doubling of some of the wire sizes. While the bonnet was up a leaking radiator cap was fixed; the rear door locks were dismantled, adjusted, oiled and greased – result – easy and tight closure; the clutch take up was adjusted to near normal operation.
- To complete the new tank supply to the pumps we re-ran the poly pipe from the new tank to the pumps to bypass sections of the old iron pipe and a non-return valve, thus re-establishing dam water to the toilets. A thankful change from the bucketing process we used for the first few days. In this process we discovered quite a lot about the old iron plumbing that still carries the dam water to the toilets and some outside taps.
- All toilets were checked as operating again, water levels adjusted, and the Terpersie unit modified to prevent premature overflow and waste of water, and reconnected to dam water.
- The Greenfields mower has been set up as the tow vehicle for the 50-litre trailer spray rig. It can now be used as a broad acre unit to attack the regrowth of Mother of Millions. For this, we supplied and fitted a 12 volt electric pump, plug, socket, switch and cable to facilitate easy connection of the two units.
- Jeff had commented that the rotary-hoe was cutting out when put under load– a petrol supply problem. The carburettor was dismantled, rebuilt and tuned to correct this.
- In all the accommodation, numerous tap-washers were replaced.



One of the rewards - *Banksia ashbyi* lights up the Garden

Then on the 10th the 'actual working bee' volunteers started arriving, and so did a ten-ton truck of sorghum mulch, courtesy of the **Salter** property and the recent floods.

With Joan's leadership and organisation, the bunch of happy, helpful and enthusiastic

(Continued on page 6)

(Continued from page 5)

volunteers and the able assistance of Jeff and Chris for whom nothing was too much trouble, **we were off to achieve great things:**



Some of the team at work...

- First priority was to build two new screening gardens in the new caravan rest area. Jeff had ploughed the soil, so our task was to prepare the holes with coco fibre, water crystals and fertiliser, water thoroughly and run irrigation pipe and drippers, then plant the carefully selected plants and mulch the whole garden surface. (As a point of interest, the soil here was tested for pH and found to be quite acid - ~4.5 so the planting holes were limed.)
- The remaining bales of mulch were shifted to different parts of the garden using tractor and ute. This was where Chris won her tractor driver's award - handed out at the Bottle Tree Inn dinner.
- Next came the new Acacia garden area, outside the loop road. This large area was cleared and ploughed and a new watering line run across the road to it. Some of the Caboolture plantings will go into this area.
- The fencing on the old Gatton plot was extended to include a large area at the top of Gumnut Walk. New watering lines were run throughout this area. Again the full treatment of preparing the holes, planting and mulching was carried out for the new plants, mostly a great selection of eucalypts and eremophilas.
- Mention should be made here of the great water trailer we were able to use courtesy of Jeff's big tandem wheeled trailer and one of the shuttle tanks.
- Down at the Garden entrance, to complement our great new entry statements, a number of new 'Robyn Gordon's were planted and their watering lines run, including two new road crossings



... and at play

dug with pick and shovel. I might add that the road base, and black soil compacted by years of driving, were rock hard and the day was particularly hot. Do I hear violins somewhere?

• As well as these major garden efforts, a lot of fill-in planting was done by Ros and Patty, Robyn, Wendy, Joan and Lyn in other areas - including extra Merinda's and Robyn's in the Gordon Grevilleas Walk; eucalypts and acacias in the Gallery gardens, in areas BB and B; grevilleas and eremophilas in the Terpersie garden; gossypiums and sennas in the area north of the Gallery where extra irrigation was added; plus a large planting of melaleucas and petrophiles in Honeyeater Walk after Allen mowed the whole area.

- After the planting, the job's not done till it's all recorded. Lyn mapped all the new plantings, checked those planted in recent years for signs of life and adjusted the records accordingly.
- While on the subject of recording – old aluminium tags found in the garden, or collected from dead plants, now have a new destination. The peg-board in the potting shed now sports 50 zip lock plastic bags, each labelled with a garden division, to store these tags and expedite recording of plant deaths.

Besides building or extending new gardens, a lot of the regular maintenance was done:

- Wendy pruned all the 'Sandra Gordon's in the Garden most expertly, and while it's not easy to prune a prickly factory, she did an excellent job on the 'Merinda Gordon' beside the Old Mill.
- The whole of the enclosed garden in front of the Mill Shed and the garden between Avochie and Terpersie were both deep mulched – a new attempt to keep down the grass permanently.
- Robyn painstakingly weeded the prostrate banksias.

(Continued on page 7)

(Continued from page 6)

- Anya put in a lot of work weeding the hybrid garden and removing the antigonon from the Quarters-Nursery fence. Repairs to the fence will now be possible.
- New Galcon valves were installed at points 3 and 5 to overcome 'non-turning off' problems.
- New stand-up piping was installed at valve 3 to lift the valve and solenoid above the soil surface and out of the runoff channel that has developed there.
- Dan attacked many of the marked trees and branches with the chain saw and cut them for walking-path logs or firewood.
- Allen and Dale collected this fallen material and other dead plants for burning using the large trailer and utility (courtesy **Carol and Ed McCormack**). Unfortunately time ran out and we didn't get a burn done in the dump.
- The good summer rains had brought on a huge crop of prickle grass, the death of many pairs of socks and boot laces, but our revenge came as it was mowed and brush cut in selected areas.
- Another ever-present task was to remove a new crop of prickly pear and mother of millions and stack for dumping.
- One of the enjoyable jobs, sometimes kept for an afternoon, was walking the Walks and noting departures from the guide notes. With the big planting load, we had time only for a few.
- We made a new friend - possibly a red-grained pobblebonk!



A very big thank you must go to Joan. Her tireless organization of the growers, plant selection and collection, garden planning, plant placement and planting procedure made this one of the best as well as the largest, new planting efforts for many years.

It was sometimes tiring, unusually hot, but coupled with some good morning teas, briefing-cum-Happy-Hours at the end of the day and a dinner at the Bottle Tree Inn, I think a good time was had by all.

Peter Reilly

SUMMER RAINS BRING GROWTH



Thanks to Sandra Neill for this wonderful photo of blown grass against a fence line.



Robyn separates a prostrate banksia from the grass during the Friends' working bee.



Anya tackles unwanted growth in the Hybrid Garden.



Ros, Patty and Joan plant into mown grass - revenge for the prickled socks of other team members!!

CABOOLTURE SGAP REPORT

Once again, our branch has had a very productive and enjoyable trip to Myall Park Botanic Garden from the 19th to 23rd April.

On the drive out west, I felt that we received a good omen for a delightful week ahead, when we saw beautiful pastel colours reflected in the clouds.

Never before have I seen such a variety of beautiful butterflies. Everywhere we were working or just admiring the gardens, we encountered Orchard Swallowtail butterflies



(right).

I saw my very first Scarlet Jezebel and we saw White Migrants, Lemon Migrants, Small Grass Yellow, Lesser Wanderer and the Dingy Swallowtail.

To the right of the Gallery we planted twelve *Swainsona swainsonioides* after Howard attacked the ground with a crowbar. In front of the Gallery, we planted *Hakea orthorrhyncha* and *Senna circinnata*.

In Avochie's garden, we planted *Acacia conferta*, *A. spectabilis* and *A. formosus*.



We erected a new fence in the freshly ripped *Acacia* area in a very short time, with everyone's help, then sprinklers were sorted and the water pump put on overnight. Next morning it was so much easier for Howard, Gary and Rob to dig the holes so the rest of us could plant the *Acacia spectabilis*, *Ac. bancroftiorum*, *Ac. grandifolia*, *Ac. landsdownia* and *Ac. conferta*. In the original fenced *Acacia* area, we planted *Acacia baileyana* and *Ac. holosericea*.

When the *Gossypium sturtianum* (Sturt's Desert Rose) were being planted, we discovered that another one had already conveniently self-sown right beside the water pipe. Marijke lovingly watered and mulched the dear little thing.

One *Eucalyptus salubris* was planted in the scientific area where we all wore facemasks while spreading mulch. *Grevillea Merinda Gordon* and *Grevillea fililoba* were planted in the garden between Avochie and the Quarters. Sue planted *Crinum* bulbs, collected by herself and Gill, near the thongaphone.

The loveliest flowering plants while we were at the garden were *Eucalyptus lansdowneana* (two gorgeous shades of pink) and *Banksia ashbyi*.

Carol



One of the *Eucalyptus lansdowneana*

While others were busy planting some of us were busy painting the tables and seats in the covered area outside the gallery. Dorinda, one of the directors, arrived so of course we stopped work to talk with her and found out, somewhat to our horror, she was there to take a bus load of people around the garden. We hoped that they were not going to stop for morning tea in the Old Mill for if they did some could go home with brown seats. Fortunately the bus must have picked her up and didn't get back until the paint was dry.

At Tara on the way home the proprietor of the service station where we were filling the bus's fuel tank asked me where we were heading. I replied home to Caboolture and he then asked where had we been. I replied Myall Park and he said that he was taking a bus load out there on May Day.

We were impressed with the condition of the accommodation, the Quarters ceilings were clear of cobwebs and the whole place was

(Continued on page 9)

(Continued from page 8)

clean. The thing that impressed me was even the ice cream container that catches the water from the tank water tap was empty - it must have been emptied shortly before we arrived. The people in Avochie noticed it seemed lighter, the lounge room had been painted and the whole place seemed lighter. [Ed: Thanks to David Salter & Phillip Lester]

Our thanks and appreciation go to the new caretakers, Chris and Jeff. *Edgar*



Some of the Caboolture crew - (back row) Garry Horne, Sue Gallagher, Graham Forster, Howard Heyworth, Joe Geoghegan, Edgar Askew, (front row) Denise White, Carol Heyworth, Rob White



HAVE YOU BEEN WONDERING HOW YOU CAN HELP THE GARDEN BUT YOU LIVE TOO FAR AWAY?

Here's the perfect suggestion:

Over the years Ted and Ann Gibbons have generously sponsored our website and for this we thank them very much.

Now an opportunity has arisen for a new sponsor - do you think that person could be you?

The website is one of our major sources of promotion and marketing.

Janine does a marvellous job of continually updating and improving the site (congratulations, Janine).

All we need now is a new sponsor to 'keep the show on the road, on the information superhighway'.

Please contact Betty or Janine (p.13) for more information.

www.myallparkbotanicgarden.org.au

GARTH STEPS DOWN AS DIRECTOR

In this issue we say 'Farewell' to Garth Shaw in his role as Director. We hope he will continue to help us where and when he can.



Garth, although a busy rector at St George, most recently served the Garden as its secretary.

Since the inception of the 'Save a Species' project, he has been instrumental in furthering the growing of local endangered plants in schools. His contact with

many of the children and teachers in the region is invaluable.

Garth often helps 'behind the scenes' too - with library and document assistance for example. His was the idea behind the Collector Plate concept.

He is a familiar figure at Open Days and he organizes and supports the printing of our newsletters.

Thank you Garth so much for your varied and valuable contributions.

HELPERS NEEDED IN BRISBANE

Each year the Society for Growing Australian Plants, Queensland Region Inc (SGAP) holds its Spring Flower Show and plant sale at Mt. Coot-tha Botanic Garden, Brisbane.

This year's Show is on 4th & 5th September and its theme will be:

'Native gardens are for kids - of all ages!'

For some years now, Trevor Bacon has organized a stall at this Show promoting our Garden and selling its merchandise.

Joan Wilkinson, manager of our Horticulture, Conservation and Research division, also puts a lot of effort into growing plants to sell at this sale - **with proceeds going to Myall Park Botanic Garden.**

Could we please have some volunteers to help out at these stalls - at any of the following times?

Friday 3rd September: set up from 1pm

Saturday 4th: Show is open from 9am - 4pm

Sunday 5th: Show is open from 9am - 3pm

If you can help, please contact Trevor Bacon on (07) 3366 0450

or Joan Wilkinson (07) 3378 3110



All ears engaged



A trio of happy campers



Just like Robin Hood

RECENT PCAP CAMP A GREAT SUCCESS

On the 15 to 17th June, Mr Sheldon Boland, Field Studies Officer from PCAP (Priority Country Area Program) Charleville, led the Glenmorgan State School children on a two day camp at Myall Park Botanic Garden. Twenty-six children arrived on Tuesday afternoon all full of enthusiasm to set up camp and call the Garden home for the next two nights.

Tents were erected with help from parents, including Sue Reilly who was on hand to meet Sheldon and discuss the activities for the next couple of days.

The Quarters were an excellent base for the preparation of meals, for hot showers and for comfortable beds for those teachers and helpers who needed a good night's sleep after a busy day in the field.

Sheldon had the children bird-watching and orienteering. They did archery, environmental studies and learned bush survival skills. They went on bush walks and even had time to keep their tents in order ready for daily inspection!

All thoroughly enjoyed their experience at the Garden and look forward to the possibility of coming again in future years.

Janine Pechey



Learning is good fun



AUSTRALIAN BIRDS FOR CHILDREN

Make birds a part of your child's life experiences

This set of 24 colourful cards provides an interactive learning experience, highlighting birds that most children can relate to. The 'front' of each 18 x 10cm card features a colourful photo of the bird while the 'back' provides examples of things to say, ask or do with children as you use the cards. They come with hints to help children learn about birds, a glossary and a colourful bag for easy use and storage.

Featured birds are easy to find in many town or bush localities and include: Superb Blue Wren, Tawny Frogmouth, Crested Pigeon, Australian Wood Duck, Galah, Welcome Swallow, Eastern Koel, Magpie Lark, Australian Magpie, Laughing Kookaburra, Blue-faced Honeyeater, Willie Wagtail.



Check out the website: www.brigalowbirds.org

Only \$20 plus p&p while stocks last. (All profits go to the Garden.) Add to your order form on the back page.

STOP PRESS - MORE GOODIES FOR OPEN DAY

Release of new fine china plate featuring Grevillea 'Sandra Gordon'

- same size as the 'Robyn Gordon' small plate –
- order now - approx \$15



Bird photographic exhibition 'Feathers and Flight':

Renowned bird photographer Graeme Chapman has generously donated four images (two depicted below) to the Brigalow Birds Education Project. Sale monies will be donated to the Garden to further research and educational programmes.

For more details please contact info@brigalowbirds.org or better still, **come to our exhibition** where these and many other outstanding images will be on display.



Left, a Chestnut-rumped Thornbill is perched alongside its nest inside the weathered remains of an old trunk. The lovely diffuse late afternoon light has helped to accentuate every detail in this picture.

Right, a Peregrine Falcon, the most universally feared hunter amongst our birds. This picture seems to emphasise the sheer power of the bird – the swept back wings and the massive talons say it all.



SNIPPETS PAGE



Glenmorgan, Queensland

Above is our new logo - look for it on our publications and notices in future.

VALE Michael Hirst

We send condolences to the family of Michael Hirst who passed away recently. Michael and his wife, Margaret, were friends of Dave and Dorothy Gordon and he was one of the early Friends.

We valued his continued support. He leaves behind a progressive organisation actively pursuing the ideals he espoused.

Dorinda and nita

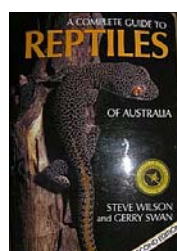


Another tree-hugger at Myall Park Botanic Garden
(Photo: nita)

For latest information and pictures on 'What's Flowering Now in the Garden' see our website - www.myallparkbotanicgarden.org.au

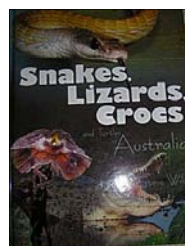
MORE BOOKS AVAILABLE from our catalogue

Order from the Garden & the profit stays here.



A Complete Guide to Reptiles of Australia (2nd ed.) by Steve Wilson & Gerry Swan

\$49.95



Snakes, Lizards, Crocs and Turtles of Australia by Steve Wilson

\$19.95

Great reference for primary school children.

Field Guide to the Reptiles of Queensland by Steve Wilson

\$34.95

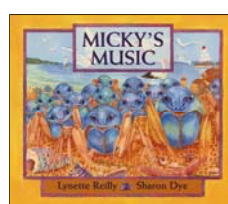


Woodland to Weeds (2nd ed.) by Nita C. Lester

Definitive reference to plants of the southern Queensland Brigalow Belt

\$49.95

For Sharp Eyes Only - by Nita C. Lester & Elaine Lyons: Illustrations show how our native animals are camouflaged in their surroundings **Was \$15 now \$10**



Micky's Music by Lynette Reilly:

Picture story book about the adventures of a soldier crab seeking his real self (for all ages)

\$5.00

CC The Miracle Bug - story for primary children about the cactoblastis beetle

\$17.50

One Man's Dream (2nd ed.) by Betty McKenzie: Biography of Dave Gordon

\$11.00

INFORMATION PAGES

Garden closed for maintenance 20 Dec—20 Jan each year
VISITORS WELCOME AT ALL OTHER TIMES

MYALL PARK BOTANIC GARDEN FEES 2009

A - GARDEN ENTRANCE FEES

Garden and Gallery \$5.00 per person
FRIENDS and under 14 FREE
School children under 14 on excursion \$2
Official Guide \$50 plus Garden entry fees
Coach tours \$5.00 pp, tour operator free Ph 4626 5969
MPBG Friends Group Membership—each visit, one free entry, other members visiting at the same time 10% discount
Organised working parties—Free (by prior arrangement only)

B - BUILT ACCOMMODATION (Garden entry included)

For bookings, contact Caretakers Ph 07 4665 6855
(advance bookings advisable May—October,)

Friends Members 10% discount.
Tour organisers Free
Children under 14 half price, under 6 free.
Linen (if required) \$5 per person (bed linen, towels)

Avochie Cottage:

1 night - 1-2 people \$60 - each extra person \$20/night
2 nights - 1-2 people \$120 - each extra person \$20/night
3 nights - 1-2 people \$160 - each extra person \$18/night
For above packages, a cleaning fee of \$20 will be added if necessary

5 nights: 1-2 people \$270 - each extra person \$18/night
1 week: 1-2 people \$360 - each extra person \$15/night
Cleaning included for 5 nights or longer.

Quarters: "backpacker" style—guests share kitchen and bathroom facilities)

per person: 1 night \$20 2 nights \$40 3 nights \$55
5 nights \$90 1 week \$120

Cleaning NOT included in Quarters packages, \$20 fee added if necessary.

Sole Use of Quarters—p.o.a.

C - TENTS & VANS (second night free)

Unpowered site: Garden entry + \$6.50 per night.
Powered site: Garden entry + \$10 per night.

D - CATERING

Meals available Bottle Tree Inn, Glenmorgan

E - GALLERY HIRE

Includes use of furniture, urn, power-points for equipment, fridge and Garden entry. Tea and coffee not provided.

\$50 first day, \$25 each extra day (includes cleaning)
\$10 per day for local groups without grant or government funding—leave clean or pay \$15 cleaning fee.

Please discuss all arrangements when you book tours or accommodation. On arrival, see Information in log box at Visitor Centre, or on-site caretaker.

Glenmorgan has basic provisions including diesel and unleaded fuel. Diesel and unleaded fuel are also available at Surat and The Gums. Fuel sales at Meandarra are card only.

ABOUT OUR ACCOMMODATION:

(Linen is not included. Ask about our linen service when you book.)

Avochie Cottage -Renovated 3 bedroom cottage with 1 double and 2 twin rooms. Bath/shower and toilet. Electric hot water system. Open fireplace in sitting room. New electric stove, microwave oven, crockery, cutlery, electric jug, fridge, frypan and toaster. Washing up and cleaning utensils supplied. Fan, heater, basic furnishings.

The Quarters: Renovated inside and out. 2 verandahs, 5 small bedrooms (8 single beds) 1 large bedroom with 1 double bed. Electric hot water. 2 bathrooms each with bath / shower, 2 toilets. Open fireplace in living area. New electric stove, microwave oven, crockery and cutlery, fridge, electric jug, frypan and toaster. Washing up and cleaning utensils supplied. Fan, heater, basic furnishings.

Caravans/Tents: Connect to the power at The Quarters, and use Toilet/ Shower facilities at the Quarters. Unpowered sites available.

For bookings, phone caretakers on 07 4665 6855.

We ask you to leave the accommodation clean when you depart, and to take all rubbish with you.

CONTACTS FOR MPBG PERSONNEL

Office 07 4665 6705
Janine Pechey myallparkbotanic@bigpond.com

Caretakers Ph/fax 07 4665 6855
Jeff and Chris mpbg@westnet.com.au

Directors/Managers

Trevor Bacon Ph 07 3366 0450
thbacon@bigpond.net.au
Gill Kidd Ph/fax 07 4663 0720
kidd_greenhills1@bigpond.com
Nita Lester Ph 07 3391 4287
N.Lester@griffith.edu.au
Megan McNicholl Ph 07 4627 6490 fax 07 4627 6364
meganm nicholl@bigpond.com
Priscilla Mundell Ph 07 4627 7124 fax 07 4627 7200
nelgai@bigpond.com.au
Lynette Reilly Ph 07 5537 3354 fax 07 5537 1803
lrreilly@bigpond.net.au
Peter Reilly Ph 07 5537 3354 fax 07 5537 1803
plreilly@bigpond.net.au
Sue Reilly Ph 07 4628 1191 fax 07 4628 1291
camilla49@bigpond.com
Betty Salter Ph 07 4669 5298 fax 07 4669 5219
glenfosslyn@bigpond.com
Dorinda Schwennesen Ph/fax 07 4626 5969
ennisanddorinda@bluemaxx.com.au
Joan Wilkinson Ph 07 3378 3110
rodgerwilkinson@bigpond.com

MPBG WEB SITE

Our website has been described as 'One of the best'. Have you looked at it recently?

Keep up to date with the latest news, workshops, gift shop specials etc at

www.myallparkbotanicgarden.org.au

WOULD YOU LIKE TO RECEIVE THIS NEWSLETTER IN GLORIOUS ORIGINAL COLOUR?



Just opt to receive it by email as a pdf file (less than 2MB).
As well, you'll be saving paper and money as we transport it all over the country - plus the time taken by our volunteers to fold, staple and post each one.

Please send Betty (see page 13) your email address which we will use in confidence only for this purpose.

Alternatively, newsletters may be downloaded directly from our website.

**Current Directors & Managers
Myall Park Botanic Garden Ltd**

DIRECTORS:

Chairman: nita c lester
Vice-Chairmen: Trevor Bacon, Peter Reilly
Secretary / Treasurer: Betty Salter
Plus: Gill Kidd, Megan McNicholl, Priscilla Mundell, Lynette Reilly, Sue Reilly, Dorinda Schwennesen.

MANAGERS:

Horticulture, Conservation & Research Joan Wilkinson
The Garden Experience Megan McNicholl
Business Management Betty Salter

Company correspondence to:

The Secretary, Myall Park Botanic Garden Ltd ,
P O Box 22 Glenmorgan, Qld 4423

Your articles, photos, advertisements.....
are welcome for inclusion in this newsletter.
Contact the Editor, Lyn Reilly, Ph 07 5537 3354 or
Fax 07 5537 1803 or email lreilly@bigpond.net.au

Material in this newsletter may be reproduced provided the source is clearly stated. Copyright permission should be obtained for material quoted from other publications.

DONATIONS

All donations of money and goods with a value of \$2 and over are tax-deductible.
Cheques to be made payable to MPBG Gift Fund.
Post to Nita C. Lester, 24 Victoria Terrace, Annerley, Qld 4103

Renew or join here

I/WE WISH TO BECOME A FRIEND OF MYALL PARK BOTANIC GARDEN

Subscriptions: Renewals to 30 September 2011

Individuals	\$20.00	Single Life M'ship	\$275.00	Community Groups	\$35.00
Households	\$30.00	Couple Life M'ship	\$440.00	Businesses	\$100.00
Concessions	\$10.00				

Please print:

Mr/Mrs/Miss/Ms.....
Address.....
.....Postcode.....
Telephone.....
Email.....

Receipt required

I wish to add a donation of (Donations of \$2 and over are tax deductible)

This is a gift subscription from

Payment enclosed \$.....

Payment may be made **either** directly into our bank account:

Commonwealth Bank, Dalby. BSB 064-412 Account No. 1000 1195 (please include your name and that it is for 'subscription')

or by cheque payable to 'Myall Park Botanic Garden Ltd.'

Whichever method of payment you use, please send this completed form to:

Mrs B. Salter, "Glen Fosslyn", Glenmorgan, Qld 4423

I/WE ARE INTERESTED IN ASSISTING WITH:

- Newsletter production (collect articles, layout, etc)
- Herbarium (helping with specimens, records etc)
- Promotion & Marketing
- Living Collection
- Retail
- Other (please indicate your interests)
.....



MYALL PARK BOTANIC GARDEN

Every purchase will help the Garden!



Try our floral china instead of flowers for that 'special day'.
It lasts much longer!!
New discount for non-Friends of 5% on every purchase of six or more fine china items. (Friends discount of 10% on all items still applies.)

MAKE YOUR ORDER HERE

Number. subtotal

A	AUSTRALIAN WILDFLOWER PAINTINGS Book by Dorothy Gordon Signed by Dorothy Gordon	\$38.50 \$42.50		
B	UNFRAMED WILDFLOWER PRINTS by Dorothy Gordon (20x30 cm)	\$ 4.50 each \$ 24.50 Set of 7		
C	NEW PLATE - Fine bone china 155mm with Grevillea 'Sandra Gordon' design. Add it to your great MPBG set.	\$ 15.00		
D	SCREENSAVER ON CD - 500 Images A Collection of stunning photographs by MPBG volunteers, and Paul Costin, Anne Thompson and Bindy Warby	\$ 20.00		
E	MUGS -Fine Bone China with the 3 Gordon Grevilleas design by MPBG artists	\$20.00 now \$17.50		
F	RICE BOWLS –115mm Fine Bone China with the 3 Gordon Grevilleas design by MPBG artists	\$ 13.50		
G	PLATES — Fine bone china 155 mm with G. "Robyn Gordon" design, makes a great set with mug	\$ 13.50		
H	COLLECTOR PLATE Features the 3 Gordon Grevilleas & blue-faced honeyeater	\$ 55.00		
I	JUG 250ml Features all three grevilleas. Very fine and light. Dishwasher and microwave safe.	\$25 now \$20		
J	SERVING / DINNER PLATE 275mm Features all three grevilleas. Makes a wonderful serving with all of the above pieces. Dishwasher and microwave safe.	\$30 now \$25		
K	LATTE MUGS. Leadlight Design. Black on white contemporary style.	\$ 10.00 special price this issue		
L	TEA TOWELS Screenprinted by hand Grevillea "Robyn Gordon" (red & green) Grevillea "Merinda Gordon" (red & green) Grevillea "Sandra Gordon" (yellow & green)	\$ 15.00 each		
M	GREETING CARDS Featuring 8 Dorothy Gordon botanical paintings	\$ 3.50 Single \$ 22.00 Set of 8		
	BOOKS - add titles and prices from page 12 (or Australian Birds for Children Cards page 11)			

Cheques payable to Myall Park Botanic Garden Ltd.

Post to
MPBG Ltd
P O Box 22
Glenmorgan
Q 4423

please add your address
Thank you for your order

Order Total	
Less Friends 10% discount	
Postage	10.00
Total	



We also accept credit card payments. Contact the office on 07 4665 6705 to arrange payment.

If undelivered, please return to
B. Sater, Glenmorgan, 4423



Friends of Myall Park Botanic Garden
Newsletter