



FRIENDS OF MYALL PARK BOTANIC GARDEN NEWSLETTER



Vol 20 No 1 Autumn 2011

*We are pleased to receive your contributions to our newsletter.
Please note all views expressed are those of individual authors.*

This year we celebrate the International Year of Forests.

The UN General Assembly has declared 2011 as the International Year of Forests 'to raise awareness on sustainable management, conservation and sustainable development of all types of forests'. Since many of our treasured species come from forests and woodlands in semi-arid, arid and dry tropical areas of Australia, it seems appropriate to remind ourselves of this aspect of our botany.

Contents:

nita's notes	p. 2
Making a bequest	p. 3
Caretakers notes	p. 3
Horticulture, conservation, research..	p. 4
Open after the big wet	p. 5
With the Simmons in Tasmania	p. 6
Farewell to three Directors	p. 7
Veteran trees	p. 9
Chairman's annual report 2010	p. 10
Snippets	p. 11
Information page	p. 12
Renewal form	p. 13
Catalogue	p. 14



Above: The summer beauty of our indigenous *Angophora leiocarpa* opposite the Hybrid Grevillea garden. Photo by Chris Guihot



In our Garden, Gimlet gum *Eucalyptus salubris* (left) and Wandoo *Eucalyptus wandoo* (right) showcase some of the woodland flora from Western Australia. (Photos Peter Reilly)



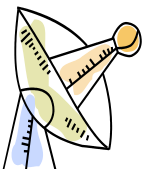
THANKS to the St. George office of Howard Hobbs, MLA for Warrego, for his ongoing support for our newsletter.

DATES for your 2011 DIARY

Directors' meetings: March 13&14; July 17&18; November 20&21. Observers are very welcome at meetings.

Open Day: 27 August

Art Exhibition: 27 August to 27 October



Contacts for Myall Park Botanic Garden

Office: Phone 07 4665 6705

Email: myallparkbotanic@bigpond.com

Post: PO Box 22 Glenmorgan Qld 4423

Website: www.myallparkbotanicgarden.org.au

NITA'S NOTES

Many have asked if our Garden has been affected by the rains and floods. We have received above average falls over an extended period resulting in losses of some banksia and grevillea species: those preferring dry feet have suffered. The local flooded creeks, on a number of occasions, restricted researcher and visitor movement. Jeff and Chris, caretakers, had planned a detailed month of travel to the east, north and south but due to the conditions these plans altered frequently but at all times they were dry and safe. (Ed. See photos on page 5)

Thank you to everyone who has shown concern for our establishment.

As the image below depicts, we have a new Board of Directors resulting in exciting plans for 2011/2012 with increased engagement with children, art and music. Research projects will include invertebrates, health of our soils, and a continuation of the reptile and bird data collection. Increasingly we are asked to facilitate or manage research projects extending our vital role in the network of botanic gardens both nationally and internationally.

On behalf of our Staff and the Directors, I trust you are all well and not affected by the recent inclement weather.

nita

CURRENT DIRECTORS of MYALL PARK BOTANIC GARDEN Ltd



Back row (L to R): Trevor Bacon, Peter Reilly, Gill Kidd, Lyn Reilly, Nita C. Lester
Front row (L to R): Betty Salter, Megan McNicholl, Joan Wilkinson

RAFFLE

Chris and Jeff have generously donated this beautiful stone for the Garden to raffle for funds.



To be drawn on May Day 2011 (a week after Easter Monday), a few \$5 raffle tickets will be sent out with this newsletter.

If you receive this by email, yours will be coming separately. Please return butts and funds in time. More tickets can be obtained from the Garden office:

Email: myallparkbotanic@bigpond.com

Phone: 07 4665 4065 or

Post: PO Box 22
Glenmorgan Q 4423

MAKING A BEQUEST TO THE GARDEN

Committing to a bequest to Myall Park Botanic Garden gives you the opportunity to support the continued development of this internationally recognised garden.

Since its inception in 1941 and the beginning of the non-profit company Myall Park Botanic Garden Ltd in 1988 the Garden has developed a national and international reputation.

Many of the plants within the Living Collection can not be observed in any other garden, making this collection essential for the conservation of biodiversity worldwide. In addition, its location within the semi-arid region of Australia, makes this garden an integral part in the network of botanic gardens throughout Australia.

The Garden has received wonderful support from benefactors over the years. Their vision and generosity has contributed to the Garden's excellence.

When making a bequest you may choose to leave the Garden money, real estate, artworks, shares, bonds, assignments of life policies and other assets. The Garden Directors will allocate funds wherever the need is greatest at the time to accelerate attaining the aims of the Garden and this may be in areas as diverse as:

- Plant research
- Educational materials and programs for children and adults
- Living collection improvements
- Computerised recording
- Herbarium, research and library facility
- Specialised botanical retail development
- Undergraduate and postgraduate research
- Administration and ongoing funding.

For Myall Park Botanic Garden to continue to prosper, we must continue to improve our resources.

Terms of a bequest

If you decide to support the Garden through a provision in your will, it would be encouraging for us if we knew of this support. Obviously we recognize that doing so does not imply a legal commitment of any kind. You will not be under an obligation to follow a particular course of action, nor will this limit your freedom to alter your will in the future should you so wish.

We like to know who our friends are so that we can keep you up to date with what we are doing.

If you decide to make a will or alter an existing will, we suggest that you consult a solicitor.

Our Bequest Coordinator will be happy to liaise with you or your solicitor.

A WORD FROM THE CARETAKERS

Just a brief report from us as another year begins. Happy New Year to everyone and we trust that not too many of you were seriously impacted by the dreadful flooding. For any of you who were, our hearts go out to you and we hope that you are gradually making your way back to normality.

We enjoyed a lovely (if somewhat damp!) holiday and are now back frantically mowing walking tracks and visitor areas in readiness for the visitors who we hope will come now that the roads are open again – the grass just loved all the rain! We were away for most of the flood period but any adverse affects on the Garden, thankfully, appear to be minimal, with no major dramas to report. A few plants have not been happy at having their feet in so much water, but others have relished it and spurted away. All in all it has survived quite well.

While there are not too many of our plants flowering at this time of year, one that is, is the beautiful lemon yellow *Banksia elderiana* (right).



Another is the *Grevillea banksii* (both the upright and prostrate forms).

The real stars at the moment though are the many Eucalyptus species that have just finished shedding their bark, looking splendid with their bare trunks of various colours. The *Eucalyptus salubris* are just spectacular, with the *Eucalyptus eremophila* and others putting on quite a show.

We look forward to seeing many of our "friends" as we move into our second year here at the Garden - gosh how time does fly!

It seems like only yesterday that we were moving in during the floods of last year and looking at grass three feet high – a small feeling of déjà vu.

Chris & Jeff (photos by Chris)

HORTICULTURE, CONSERVATION & RESEARCH

Much has happened since the last Newsletter. The weather has taken precedence in a big way with rainfall being at abnormal levels. Most plants are thriving but there have been some losses. Of course the grass is also growing quickly.

In comparison with earlier years, 2010 resulted in more additions to the Living Collection than in past years. Some were new species but in general we have been increasing the numbers of plants and their situations in the Garden.

In October, the Caboolture branch of the Society for Growing Australian Plants made their second visit to the Garden for 2010, having postponed a visit planned for early September. The unsettled weather conditions resulted in a curtailed visit but much was again achieved with additional plantings in the new Acacia area and around the Gallery and Cottages.

They have mapped out initial **proposals for a new walk** to the north of the Gallery. Dave Gordon's early plantings of mallees and acacias will be highlighted as we open up an area of the Garden that has been explored by only the more adventurous visitors.

Their upgrades to the Gordon Grevillea Walk and car parking area have been carried out with new signage and a site prepared for a picnic table. Further plantings of a wider range of grevillea species will be added to the southern end of the area later this year.

The Autumn plantings that survived the heavy frosts are now powering ahead. Some losses have been replaced and these are also thriving. Some plants in the new Acacia area have reached the top of the fence and are obviously well suited to the conditions. Many southern Australian eucalypts were planted by Chris and Jeff during the year, some as late as early December. The Gumnut Walk and the Walk for All Seasons are the beneficiaries.



Eucalyptus crucis



Eucalyptus campaspe



Eucalyptus lansdowneana



Eucalyptus kingsmillii



Eucalyptus lehmanii



Eucalyptus websteriana

[See centre column for how some of these new plantings should look in the future—pics by Peter Reilly]

Plans are being made for our Autumn working bees. The Caboolture group will visit first from April 11th. The Friends working bee will be after Easter and start on April 30th. **We have regulars but are always looking for more help if anyone is interested and hasn't been involved before.**

The working bees tackle a variety of tasks:- site preparation and planting, general Garden maintenance and weeding, removal of weed species and unwanted plants in inappropriate situations, preparing new areas of the Garden for future plantings by running new watering lines and fencing (to protect new plantings from resident macropod destruction), mapping of plants in each Garden division using GPS (this is ongoing), seedbank updating involving seed collection, cleaning, packaging and filing, and setting up a photographic database of weed species and their method of removal. Not all work is strenuous or needs to be carried out in the heat of the day. Our smokos and evening get-togethers are memorable.

Grant funding from the Western Australian Museum enabled the setting up of a **Biodiversity project** with valuable input from former CSIRO entomologist, Don Sands. Plans are progressing for the next stage and we hope to maximise funding opportunities to enable it to proceed. Suitable plants have been sourced with the help of Steve Plant at the Toowoomba Community Nursery and will be planted out in autumn. We are concentrating on food and nectar plants for the invertebrate species already found in the Garden as well as extending the areas of brigalow and bull oak to support the endangered Western Imperial Blue and the Bulloak Jewel butterflies.

More stingless bee hives have been delivered to the Garden by Alan Beil from the Tara region. Our original four hives are thriving with the constant source of nectar in the Garden and

(Continued on page 5)

(Continued from page 4)

haven't had time to live up to their nickname of 'The Lazy Bee'.

The Myall Park Botanic Garden Herbarium has been transferred from Dave and Dorothy's homestead and is in temporary storage until a more permanent solution can be arranged. It is in relatively good condition and is being monitored regularly.

Plants are still being propagated for fundraising at SGAP plant sales. This income is going towards the acquisition of desirable species for the Garden. The October sales at MacGregor High School were held on a particularly blustery day but we managed to raise a tidy sum. Commission from the sales goes to SGAP so we are also contributing to their fund raising and appreciate the work involved in their preparation for these days.

The Queensland branch of the **Grevillea Study Group** of the Australian Native Plants Society, Australia (ANPSA), will be holding their August meeting at the Garden on our Open Day weekend in August. We hope they enjoy the visit and feel sure that they will find many plants of interest.

We have been fortunate to find a grevillea enthusiast who is prepared to try **cuttings from our Western Australian hakea species** for us. Elva Carter of Carter's Tubes at Burpengary has been given material to propagate and in spite of the wet conditions lately, has had a measure of success. We will be able to use these plants to help restore a division of the Garden previously planted with many hakeas but now needing much attention. We are in the process of applying for a grant to manage the area using recorded history to replace many of the original hakea species.

All these projects take time. However the enthusiasm of the committee and the excellent support we are receiving from Jeff and Chris, our Caretakers, is making it all possible.

Joan Wilkinson Manager, Horticulture, Conservation, and Research Committee

WORKING BEE HELPERS NEEDED

WHEN? The Friends' Working Bee this year will be held from 30th April to 8th May.

WHERE? Workers will be accommodated (free) as usual in Avochie Cottage or The Quarters—see details page 12. Or bring your own van.

WHAT TO BRING? Your own bed linen and towels, plus all the food and drink you will need. (Extra provisions are available at the general store in Glenmorgan and we usually go out for dinner one night at the Bottle Tree Inn there.)

MORE? Ring or email Peter or Joan (see page 12)

It's good fun and worthwhile as well!

OPEN AFTER THE BIG WET

The Garden is open for visitors after the 'Big Wet'. Our heartfelt sympathies to everyone affected by the floods or Cyclone Yasi whether tragically or in lesser ways.

On the local scene the roads to our Garden are now open, although we can't guarantee their condition for a while. It was hard to imagine that the Condamine bridge west of Dalby was under water for three weeks, in two bouts, after Christmas. The bridge at Surat was well under water for over a month.



Water flows through the Garden towards the dam
Photo Chris Guihot



Our local Directors and Friends had their share of water views too. Among the many photos I have received is the one **above** from Sue which shows a helicopter encouraging a group of steers to move to safety on their property.



At left are some residents 'enjoying' new water views on Schwennesen's Pialaway.

UNFORGETTABLE TIME IN NORTHERN TASMANIA

As guests of Marion and John Simmons, Phillip and Nita recently spent nine enjoyable days investigating parts of the north east of Tasmania.

Nita said, 'Marion and John have unlimited enthusiasm for all things of nature from rocks, plants, animals, art and ecology. They have a quiet manner of making other people enthusiastic and encouraging them to further their understanding of our world'.

Their private garden is an amazing collection of predominantly small plants including a wide selection of endemic species mainly resulting from cuttings collected over the decades. 'Our heads were spinning with all the information after two hours in their garden, and we had only walked through a part of the collection', Phillip said.



Marion and John Simmons in their garden

The Launceston Field Naturalists Club were bequested 'Skemps', a 52 hectare former farming property and the group is currently re-establishing the natural vegetation, waterways, farm buildings etc. The site is for research and recreation, and accommodation is available on site for school groups, researchers and everyone else who would like to relax and learn more about nature.



Checking the water system at 'Skemps'

Part of Phillip and Nita's time was spent at Ben Lomond as guests of the Launceston Field Naturalists Club. Sub-alpine vegetation and insects were the focus but climbing to the highest peak in Tasmania and bird watching made it into their programme.



Phillip admiring the beauty of subalpine vegetation

Phillip and Nita wish to thank Marion and John for a most remarkable experience.

Words and images by *nita*

ART EXHIBITION 27 August—27 October

Myall park botanic garden

view - with a finer brush

Carol McCormack says she has been longing for years to paint the Garden rather than the walls at Myall Park Botanic Garden and this little exhibition represents the beginning of this dream. It will consist of several small semi-abstract views and will hang from the end of August through until the end of October.

All profits will go to the Garden

FAREWELL TO THREE DIRECTORS

Dorinda Schwennesen, Priscilla Mundell and Sue Reilly tendered their resignations at our AGM last November. As we all know, life moves on and change remains inevitable. However we will miss these hard-working people from our Board and publicly THANK them for the years they have devoted to our Botanic Garden, furthering its mission and aims. We are glad that they have said they will always support us in whatever other roles they can.

Dorinda Schwennesen

The Garden is a richer place for the contributions made by Dorinda over the last 22 years.

Her major official area was administration. Joining the original committee at its formation in 1988 she held the office of secretary in 1991 and continued after the transition to company in 1992 through until 2005.

Necessary issues such as insurance and strategic planning came with the job as well as minute taking and correspondence. When information was needed, Dorinda could put her hand on the letter or minutes covering any situation – and we could be sure these minutes would be a reliable and accurate record. Her attention to detail kept many a meeting on track, and her sense of balance, justice and fair play helped form and inform many of our boardroom decisions.

Dorinda was chairman from 2007 to 2009, and for many years she represented the Garden on the Murray Darling Basin Committee which involved more time and travel on our behalf.

In the early days of the company, Dorinda encouraged us to access help to build the professional side of our organisation and we became familiar with swot analyses, strategic and operational planning and techniques for capacity building. At the same time she attended to maintaining our reputation for friendliness and hospitality, being the one who remembered the milk, provided the nice little extras for the smokos or bird watchers' breakfasts, and organised directors to bring the right sort of goodies to make our sleepover between end-of-year marathon meetings a festive occasion.

Dorinda was one of Dave Gordon's best students, remembering his stories and the names of the plants, so a natural outcome was her long held job as Garden guide. Many coaches and private parties had their visits enhanced by her intimate knowledge of plants and history and by her keen observation. Another product of this intimate knowledge was her knack of interpreting, adding interesting snippets to our signs, brochures and labels. She was an eagle-eyed and accurate proof-reader, invaluable talents for interpretive work and the jobs she held in the labelling and seed bank areas.



She is a creative person, a good photographer and proficient with needle and sewing machine. She was the one who would find an entry form for a competition or exhibition that would help put the Garden on the map, or devise a programme of events to achieve the same result. Who can forget the rolling workshops she masterminded to celebrate Dave's centenary in 1999, the celebration of the Year of Older Persons also in 1999, or her performance as Plucka Duck at the Volunteers function she masterminded in 2001!

If you had a job to complete and Dorinda had a spare hand, it was given to help, whether it were fixing a flat tyre, painting a wall or mapping a garden area. All her contributions were given in the spirit of the Gordon legacy, with enthusiasm and friendship. This spirit has helped make our organisation what it is today and differentiate it from many others.

May this spirit long continue.

Carol McCormack

Priscilla Mundell



Priscilla's contributions over the past many years, her valuable insights into proposed events and her solutions to improve our processes have propelled us forward with vigour and direction. Without her, the organisation would not be in such a solid position.

nita

The following is taken from the Directors' recent (successful) nomination of Priscilla for the Western Downs Regional Council Cultural Award.

'Priscilla has been a hard-working and extremely well respected Director of the Garden for the past 13 years. Manager of the retail division (and highly regarded for her culinary skills) she was mainly responsible for compilation of the recipe book 'A Taste of the Outback' featuring bush foods.

Her input into the Art in the Garden area has contributed to the many exhibitions held. She helped with organization, hanging and catering for exhibition openings. In her role as an artist, her paintings have graced the Gallery walls in a number of exhibitions over the years.

Her personal experience in running 'Nelgai Farm' B&B has assisted our decision making and improved the experience of those who visit our Botanic Garden.

She has also been involved in many other facets of the Garden. She is reliable, always doing what she has said she would (or more) and always doing it on time or before. She 'grows' with whatever role she takes on and her input is always well thought out. Priscilla is selfless, always putting others before herself.

Sue Reilly



Sue grew up at Glenmorgan so the Garden lies close to her heart. She has combined her love of plants and her talents as an artist to assist the Garden in the Gallery as a Manager of the Art in the Garden for a number of years as well as in the Retail section.

Sue has an easy manner of chatting with people and this is at its best during

Open Days where she is invariably on a stall serving food or seeing to visitor needs.

She accepted a role as Director in 2004 and her activity on behalf of the Garden has been wide-ranging and enthusiastic.

Sue was passionate about her role as Manager of the Art in the Garden division, which she held from 2006 until the restructure in 2009.

The project which probably gave her most satisfaction was the 'Sense of Arrival'. Designed by Jenny Cameron (granddaughter of Dave and Dorothy Gordon) and built by Jenny's husband Andy, the panels were finally installed when the Council replaced our old gates with a new grid. Sue even co-opted her husband Geoff, his offsider Jeff and their respective sons to help with the heavy task of installing the decorative side panels and repairing the fence.

Sue organized workshops (wire sculpture with Garry Greenwood; Hebel sculpture with Rosemary Anderson; corrugated iron sculpture with Ben Somerville), often resulting in donations to the Garden by the workshop leaders.

She helped in the getting of grants to stage these 'happenings' and their acquittal.

She played a role in the visit of Doug Spowart and Vicky Cooper; in the children's Art competition 'My Favourite Fauna'; exhibitions such as the Brigalow Bird Week photographic exhibition and future ones such as the new one in Spring by Carol McCormack.

Sue has always been enthusiastic, cheerful and selfless. The Garden has much to be grateful to her for and we look forward to her continuing association in the future.

Lyn

SARAH & DAVID CALDWELL

In view of their long association with the Garden, we asked recent Life Members Sarah and David Caldwell to tell us a bit about themselves.

'David and I have been Friends of Myall Park Botanic Garden for about 17 years. We first heard about the Garden when we were members of Ausbud. Ross and Wilma Tait suggested that we meet there for a weekend, discuss methods of propagation of eucalypts suitable for the cut flower market and have a look at the Garden.

We stayed in Avochie cottage and had a wonderful time looking at and talking about plants. We have visited a few times since then, the last time when we took two German landscape architects to visit the Garden.

We run a wholesale native plant nursery on our property Mole Station, and with Nita's guidance have sent plants to the Garden on many occasions. We have since been inspired to help initiate a naturalists group in Tenterfield, northern New South Wales, where we are trying to create our own Botanic Garden to showcase the local flora.'



Recent floods came close to the nursery



Another flood picture from the Caldwells

Sarah Caldwell

VETERAN TREES

Although age is the main criterion for being considered a veteran, other features help decide whether a particular specimen is or not, for example:

- Hollowing in trunk, branches or roots
- Habitat for associated organisms
- Great stem girth
- Significant sized deadwood

It is perfectly possible for a young tree (50 years and up) to be described as a veteran if it contains veteran characteristics.

The iconic 'Dig Tree' *Eucalyptus coolibah* on the bank of Cooper Creek has history as well as age to thank for its veteran status.

Veterans matter

Veteran Trees reflect the longer, slower cycles of the natural environment. More is going on in the habitat than just the trunk we see above ground.

The extraordinary relationship between soil dwelling organisms and tree roots forms the foundation for the entire soil food web. This is the engine that drives all the other terrestrial ecosystems—our gardens and our crops, the wildlife around us and human life itself.

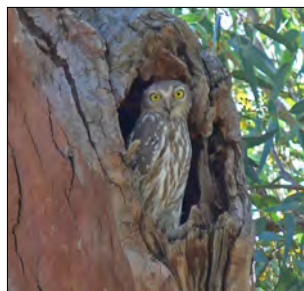
For more information you may like to check out the website where I obtained most of this information:

www.veterantreegroup.blogspot.com

Lyn



Two veteran *Eucalyptus coolibah* trees. **Above**, the 'Dig Tree' and **below** a tree hugger measures the girth of one at the Coongie Lakes.



Left : A barking owl values this hollow in a veteran tree on the banks of Cooper Ck.



Would you consider the large ironbark *Eucalyptus crebra* (**left**) in the bus turnaround at the western end of the Garden as a 'veteran tree'?

What about the wonderful *Hakea lorea* (**right**) further down the Loop Road?



2010 CHAIRMAN'S ANNUAL REPORT— some highlights

2010 was the **International Year of Biodiversity**. Our Garden is a great place to celebrate the diversity of Australian plants, especially those of the arid, semi-arid and dry tropics. The conservation and development of our Garden during 2010 helped emphasise our important role in the network of botanic gardens, ensuring the increasing number of threatened species is in safe hands.

We pursued strong conservation and educational programmes and these need to continue to flourish, so that everyone truly understands that all life depends on plants.

Let's list our achievements in this area: specialised growers contributed to a focused planting programme; carefully planned and enacted working bees; staff capacity building in the areas of botany and visitor services; special guests with focused briefs [Bruce Carey erosion; Don Sands invertebrates refuges; Allan Beil stingless bees].

The Company retains its specific focus on assuring the conservation status of the retained and ex-situ collections. Ex-situ collections of threatened species will become increasingly important as the effects of global climate change are felt.

In the long term involving many more people in the conservation of local plants and animals will be the key to our success. The Garden partnerships of 2010 included: Western Downs Regional Council, CSIRO, University of New South Wales, Griffith University, Greening Australia, Society for Growing Australian Plants, Field Naturalists, Network for Botanical Gardens, and Botanical Gardens Conservation International to name but a few.

We are ideally placed to educate, enable and inform the public - a new connection with the Queensland Museum; increasing engagement with local communities in plant conservation; individual Directors and Staff actively involved in Landcare, catchment organisations, Greening Australia, restoration programmes, art and craft groups, garden days and school events – this individual level of involvement value adds to the Garden's presence in the local and national communities.

Engaging with local and broader audiences is a challenge but as in past years we have continued to enjoy connections with: Queensland Arts Council, Priority Children's Access Programme, local school groups and other local groups. Brigalow Birds has opened our Garden to wider audiences and proved to further strengthen the links with the Western

Downs Regional Council. Using this project as an exemplar, other possibilities will open for we all wish our Garden to have a place in the 21st century - a place to demonstrate the importance of history; the power of honorary capacity; and a guide towards sustainable living.

Looking back over the Company's achievements in 2010, I am struck by how much we achieved with such a small budget. We were able to do this

The challenges remain great but we continue as a major force for flora and fauna conservation

because of the fantastic network of Directors, Staff and Garden Friends and achieved outstanding results. To the executive, Betty Salter, Peter Reilly and Trevor Bacon, go our heartiest thanks. All have worked beyond expectations especially Betty in her double role. You have all not only fulfilled your Company roles but

been my support and sounding board throughout the year. The support given by the Western Downs Regional Council, grant successes, returning visitors, new visitors and those yet to visit, have provided the impetus and the essential funds for our continued growth. Thank you.

During the beginning of the year I am sure we all felt a little like Alice tumbling down the rabbit hole as we needed to quickly act to secure the Garden water storage and electricity supply. I wish to acknowledge the gifts donated over past years as these enabled our hand. We did reach the small door and passed through with the following success: air conditioning to our Gallery and public welcoming space, insulation in the Avochie ceiling, plans to expand Garden accommodation, beginning an invertebrate refuge project and a welcome sign canopy.

On a sad but happy note we received resignations from four directors: Priscilla Mundell, Sue Reilly and Dorinda Schwennesen and Garth Shaw. Not for health reasons but as a change of personal focus. For all your work over many years, we all thank you and hope you have enjoyed the journey we have all shared. Without your individual contributions, our Garden and each of us personally, would not be where we all stand today. You have all offered to assist in our future events and we look forward to continuing our association.

The new business structure which enables all participants to engage at the level they prefer, and widening the committee membership to add expertise in their fields, has boosted energy and vitality within the Company. Overall this has been an exciting year.

The challenges our Company faces remain great but collectively we continue as a major force for flora and fauna conservation.

Nita C. Lester

SNIPPETS

APPRECIATION TO STAFF

At the end of her Chairman's Report at the AGM, Nita added the following:

One of our news worthy billionaires recently showed his appreciation to staff in a very generous fashion. While our appreciation of your contributions is no less, sadly our budget is small.

Chris please come forward and accept your Bentley, Jeff your Ferrari and Janine your Porsche.

Here is Chris receiving her 'Bentley'.



WELCOME TO NEW FRIENDS:

Jennifer Pettigrew

Dr Marcelle Stirling (Life member)



We trust your association with the Garden will continue to be a long and happy one.

SOME BOOKS AVAILABLE

from our catalogue

Order from the Garden & the profit stays here.



NEW!

Brigalow Birds: birds of Myall Park Botanic Garden & surrounding brigalow region

Book \$33

DVD \$33

Book + DVD \$60

Field Guide to the Reptiles of Queensland by Steve Wilson \$34.95

For Sharp Eyes Only - by Nita C. Lester & Elaine Lyons: Illustrations show how our native animals are camouflaged in their surroundings \$15.00

CC The Miracle Bug - story of the cactoblastis beetle for primary children \$17.50

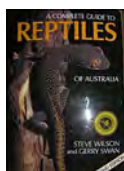
One Man's Dream (2nd ed.) by Betty McKenzie: Biography of Dave Gordon \$11.00



Woodland to Weeds (2nd ed.) by Nita C. Lester
Definitive reference to plants of the Southern Queensland Brigalow Belt \$49.95



Micky's Music by Lynette Reilly: Picture story book about the adventures of a soldier crab seeking his real self (for all ages) \$5.00



A Complete Guide to Reptiles of Australia (2nd ed.) by Steve Wilson & Gerry Swan \$49.95



Australian Birds for Children
Set of 24 colourful cards featuring common easy-to-find birds - bird on front, information on back of each 18x10cm card \$20



Snakes, Lizards, Crocs and Turtles of Australia by Steve Wilson
Great reference for primary school children. \$19.95

Email or use form on page 14 - not forgetting to add a one-off cost of \$10 postage per order.

For latest information and pictures on 'What's Flowering Now in the Garden' see our website -www.myallparkbotanicgarden.org.au

INFORMATION PAGES

Garden closed for maintenance 20 Dec—20 Jan each year
VISITORS WELCOME AT ALL OTHER TIMES

MYALL PARK BOTANIC GARDEN FEES 2011

A - GARDEN ENTRANCE FEES

Garden and Gallery \$5.00 per person
FRIENDS and preschool children **FREE**
School children under 14 \$2
Official Guide \$50 plus Garden entry fees
Coach tours \$5.00 pp, driver & tour operator free
MPBG Friends Group Membership—each visit, one free entry, other members visiting at the same time 10% discount
Organised working parties—Free (by prior arrangement only)

B - ACCOMMODATION (Garden entry included)

For bookings, contact **Caretakers Ph 07 4665 6855**
(April—October, advance bookings advisable)

Friends Members 10% discount.
Tour organisers Free
Children under 14 half price, under 6 free.
Linen (if required) \$5 per person (bed linen, towels)

Avochie Cottage:

1 night - 1-2 people \$80 - each extra person \$20 / night
3 nights - 1-2 people \$220 - each extra person \$20 / night
1 week - 1-2 people \$480 - each extra person \$20 / night
For above packages, a cleaning fee of \$20 will be added if necessary

Cleaning included for 5 nights or longer.

The Quarters: (guests share kitchen and bathroom facilities)
per person: 1 night \$30 3 nights \$80 1 week \$180
Cleaning NOT included in The Quarters packages, \$20 fee added if necessary.
Sole Use of The Quarters—p.o.a.

C - TENTS & VANS (Pay 2 nights, get 3rd night free)

Unpowered site: \$20 per site per night for 1-2 people.
Powered site: \$25 per site per night for 1-2 people

D - CATERING

Meals available Bottle Tree Inn, Glenmorgan and General Store, Glenmorgan.

E - GALLERY HIRE

Includes use of furniture, urn, power-points for equipment, fridge and Garden entry. Tea and coffee not provided.

\$50 first day, \$25 each extra day (includes cleaning)
\$10 per day for local non-profit community groups—please leave clean or pay \$20 cleaning fee.

Please discuss all arrangements when you book tours or accommodation.
On arrival, see Information in log box at Visitor Centre, or on-site caretaker.

Glenmorgan has basic provisions including diesel and unleaded fuel. Diesel and unleaded fuel are also available at Surat and The Gums. Fuel sales at Meandarra are card only.

ABOUT OUR ACCOMMODATION:

(Linen is not included. Ask about our linen service when you book.)

Avochie Cottage -

[Right] Renovated 3 bedroom cottage with 1 double and 2 twin rooms. Bath/shower and toilet. Electric hot water system. Open fireplace in sitting room.

New electric stove, microwave oven, crockery, cutlery, electric jug, fridge, frypan and toaster. Washing up and cleaning utensils supplied. Fan, heater, basic furnishings.



The Quarters: Renovated inside and out. 2 verandahs, 5 small bedrooms (8 single beds) 1 large bedroom with 1 double bed. Electric hot water. 2 bathrooms each with bath / shower, 2 toilets. Open fireplace in living area. New electric stove, microwave oven, crockery and cutlery, fridge, electric jug, frypan and toaster. Washing up and cleaning utensils supplied. Fan, heater, basic furnishings.

Caravans/Tents: Connect to the power at The Quarters, and use Toilet / Shower facilities at The Quarters. Unpowered sites available.

For bookings, phone caretakers on 07 4665 6855.

We ask you to leave the accommodation clean when you depart and to take all rubbish with you (no collection here).

CONTACTS FOR MPBG PERSONNEL

Office	07 4665 6705
Janine Pechey	myallparkbotanic@bigpond.com
Caretakers	Ph/fax 07 4665 6855
Jeff and Chris	mpbg@westnet.com.au
Directors/Managers	
Trevor Bacon	Ph 07 3366 0450 thbacon@bigpond.net.au
Gill Kidd	Ph/fax 07 4663 0720 kidd_greenhills1@bigpond.com
Nita C. Lester	Ph 07 3391 4287 N.Lester@griffith.edu.au
Megan McNicholl	Ph 07 4627 6490 fax 07 4627 6364 meganmcnicholl@bigpond.com
Lyn Reilly	Ph 07 5537 3354 fax 07 5537 1803 lrreilly@bigpond.net.au
Peter Reilly	Ph 07 5537 3354 fax 07 5537 1803 plreilly@bigpond.net.au
Betty Salter	Ph 07 4669 5298 fax 07 4669 5219 glenfosslyn@bigpond.com
Joan Wilkinson	Ph 07 3378 3110 rodgerwilkinson@bigpond.com

MPBG WEB SITE

Our website has been described as 'One of the best'.
Have you looked at it recently?

Keep up to date with the latest news, workshops etc at
www.myallparkbotanicgarden.org.au

WOULD YOU LIKE TO RECEIVE THIS NEWSLETTER WITH PHOTOS IN GLORIOUS ORIGINAL COLOUR?



If you opt to receive it by email as a pdf file, then that's what awaits you. As well, you will be helping to cut down the amount of paper we pay to transport all over the country and the time taken by our volunteers to fold, staple and post each one.

Please send Betty (see page 12) your email address which we will use in confidence only for this purpose.

Alternatively, newsletters may be downloaded directly from our website.

**Current Directors & Managers
Myall Park Botanic Garden Ltd**

DIRECTORS:

Chairman: nita c lester
Vice-Chairmen: Trevor Bacon, Peter Reilly
Secretary/Treasurer: Betty Salter

Plus: Gill Kidd, Megan McNicholl, Lynette Reilly, Joan Wilkinson.

MANAGERS:

Horticulture, Conservation & Research: Joan Wilkinson
The Garden Experience: Megan McNicholl
Business Management: Betty Salter

Company correspondence to: The Secretary,
 Myall Park Botanic Garden Ltd,
 PO Box 22, Glenmorgan, Qld 4423

Your articles, photos, advertisements.....
 are welcome for inclusion in this newsletter.
 Contact the Editor, Lyn Reilly, Ph 07 5537 3354 or
 Fax 07 5537 1803 or email lreilly@bigpond.net.au

Material in this newsletter may be reproduced provided the source is clearly stated. Copyright permission should be obtained for material quoted from other publications.

DONATIONS

All donations of money and goods with a value of \$2 and over are tax-deductible. Cheques to be made payable to MPBG Gift Fund. Post to Nita C. Lester, 24 Victoria Terrace, Annerley, Qld 4103

Renew or join here

I/We wish to remain / become a Friend of Myall Park Botanic Garden Ltd

Subscriptions: Renewals to 30 September 2011

Individual	\$20.00	Single Life M'ship	\$275.00	Community Groups	\$35.00
Household	\$30.00	Couple Life M'ship	\$440.00	Businesses	\$100.00
Concessions	\$10.00				

Please print:

Mr/Mrs/Miss/Ms.....
 Address.....
Postcode.....
 Telephone.....
 Email.....
 Receipt required

I/We are interested in assisting with:

- Newsletter production (collect articles, etc)
- Database entry
- Herbarium (helping with specimens, records etc)
- Promotion & Marketing
- Living Collection
- Retail
- Other (please indicate your interests)

I wish to add a donation of (Donations will be credited to the tax deductible Gift Fund and receipted.)

This is a gift subscription from

Total payment \$.....

Payment may be made **either** directly into our bank account:

Commonwealth Bank, Dalby. BSB 064-412 Account No. 1000 1195 (please include your name and that it is for 'subscription')

or by cheque payable to 'Myall Park Botanic Garden Ltd.'

Whichever method of payment you use, please send this completed form to:

Mrs B. Salter, "Glen Fosslyn", Glenmorgan, Qld 4423



MYALL PARK BOTANIC GARDEN

Every purchase will help the Garden!



Try our floral china instead of flowers for that special gift.

New discount of 5% for non-Friends on every purchase of six or more fine china items. (Discount of 10% for financial Friends as normal)

MAKE YOUR ORDER HERE

Number. subtotal

A	AUSTRALIAN WILDFLOWER PAINTINGS Book of Dorothy Gordon's paintings Signed by David Gordon	\$ 38.50 \$ 42.50			
B	UNFRAMED WILDFLOWER PRINTS by Dorothy Gordon (20x30 cm)	\$ 4.50 each \$ 24.50 (Set of 7)			
C	TASTE OF THE OUTBACK our native foods recipe book	\$7.50			
D	SCREENSAVER ON CD Images A Collection of stunning photographs by MPBG volunteers, and Paul Costin, Anne Thompson and Bindy Warby	\$ 20.00 500 images			
E	MUGS - Fine Bone China with the 3 Gordon Grevilleas designed by MPBG artists	\$ 20.00			
F	RICE BOWLS –115mm Fine Bone China with the 3 Gordon Grevilleas designed by MPBG artists	\$ 13.50			
G	PLATES—Fine bone china 155 mm G. "Robyn Gordon" or new "Sandra Gordon" design. Either makes a great set	\$13.50 'Robyn' \$13.50 'Sandra'			
H	COLLECTOR PLATE Features the 3 Gordon Grevilleas & blue-faced honeyeater	\$ 55.00			
I	JUG 250ml Features all three grevilleas. Very fine and light. Dishwasher and microwave safe.	\$25			
J	SERVING / DINNER PLATE 275mm Features all three grevilleas. Makes a wonderful serving with all of the above	\$30			
K	LATTE MUGS. Leadlight Design. Black on white contemporary style.	\$ 10.00 Special			
L	TEA TOWELS Screenprinted by hand Grevillea "Robyn Gordon" (red & green) Grevillea "Merinda Gordon" (red & green) Grevillea "Sandra Gordon" (yellow & green)	\$ 15.00 each			
M	GREETING CARDS Featuring 8 Dorothy Gordon botanical paintings	\$ 3.50 Single \$ 22.00 Set of 8			
BOOKS	- add titles and prices from page 10				



Cheques payable to Myall Park Botanic Garden Ltd.

Post to
MPBG Ltd
P O Box 22
Glenmorgan
Q 4423

please add your address
Thank you for your order

Order Total	
Less Friends 10% discount	
Postage	10.00
Total	

We also accept credit card payments. Contact the office on 07 4665 6705 to arrange payment.